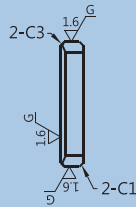
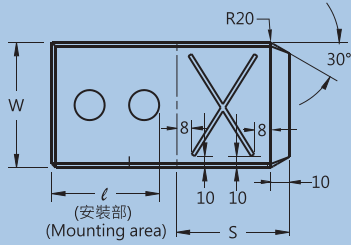


Heel Guide Plate with Oil Groove - with Bolt Hole

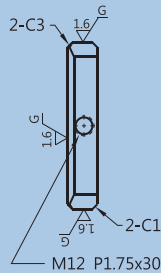
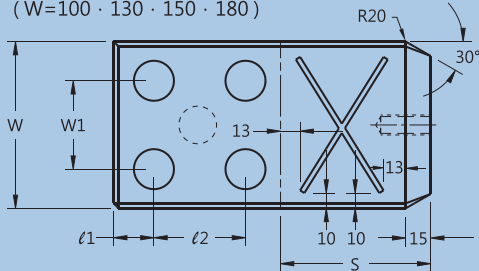
油槽型外導板-螺栓孔型



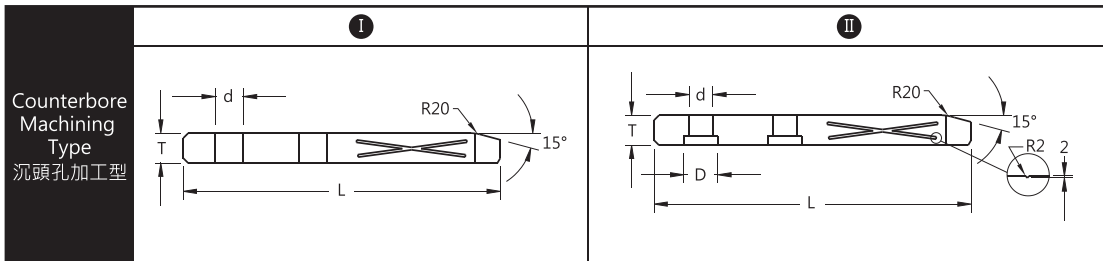
(W=50 · 70)



(W=100 · 130 · 150 · 180)



Type 品名	Material 材質	Heat Treatment 熱處理	Hardness 硬度	Delivery 交貨日
SZ-GGWA	S45C	Surface Hardened 高頻淬火	55HRC ~	10 Working Days 10 個工作日



Type	W	S	L (u:5mm)	T	ℓ	ℓ1	ℓ2	W1	d	D	t	Bolts
SZ-GGWA	50	60	150~180	30	90	20	50	-	18	26	18	2
		90	190~250									
	70	90	200~250	35	110	25	60	-				
		120	230~350									
	100	120	270~320	45	150	30	90	60				
		180	330~400									
130	150	300~380	50	150	30	90	80					
	210	390~500				120						
150	180	340~450	60	160	35	90	100					
	240	460~550				150						
180	200	380~470	180	180	110	120						

Order Ex. 訂購範例

SZ-GGWA-W-S-L-I

※ u=unit

Visit us : www.hdw.com.tw
Contact : headway@hdw.com.tw